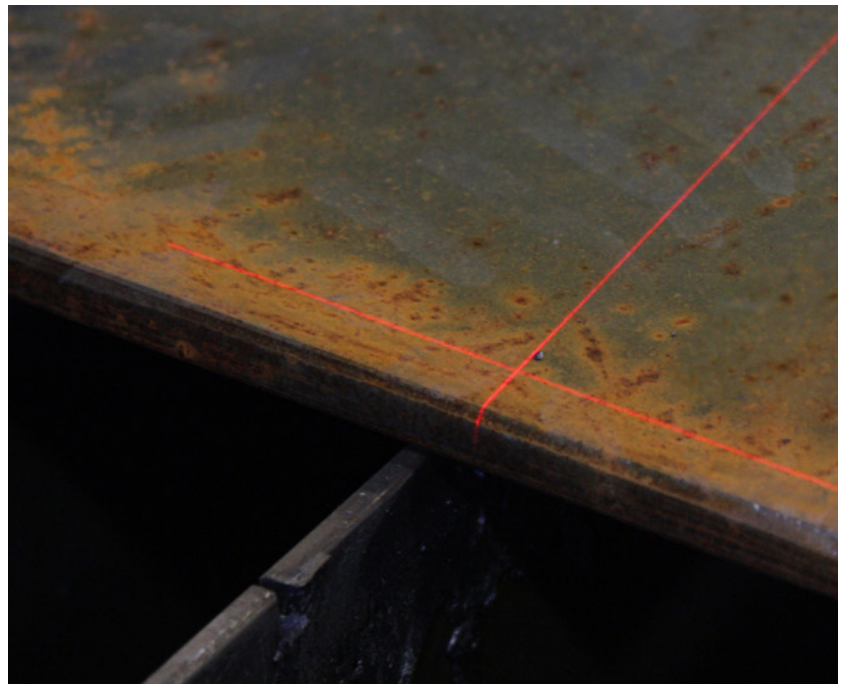


Cross-Hair Laser Plate Alignment Tool

DESCRIPTION:

The cross hair alignment laser enables the machine operator to accurately establish the corners of a plate. The laser is also very useful when aligning fixtures on the cutting table.

If the edges of a plate are square with the axes of machine motion, a single point at the plate corner may be used as the alignment reference. However, if the plate was set on the cutting table at an angle to machine motion, the "skew" function is used by referencing a corner point and a second point a distance from the corner along the edge of the plate.



APPLICATIONS:

- Aligning a program to a plate
- Skewing a program to a plate
- Aligning a fixture to a known location on the cutting table
- Tracing the path of a program prior to cutting