

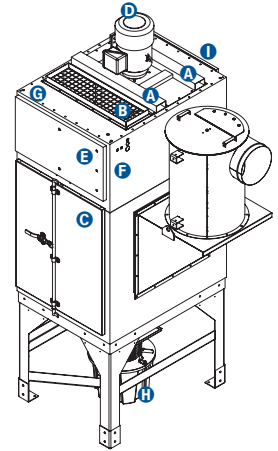
DT4-6-4500-15

(for use with 6' & 8' ZDT & 10' TracKlean tables, up to 300A plasma)

Why Plaser?

1. Clean Air Monitor — **Always exhausts Clean Air**
2. Complete Package “Factory Assembled Components” — **Easy installation, you just provide power and compressed air**
3. Fully welded single unit — **Leak Free performance**

- A Fork Pockets
- B Clean Air Exhaust
- C Filter Access Door
- D Motor
- E Electrical Enclosure
- F Compressed Air & Solenoid Access
- G Compressed Air Connection 1" NPT
- H Hopper & Short Legs w/20 Gallon Drum
- I Blower Access (on back)



General Information:

Motor: 15HP

Blower: Backward Inclined Airfoil

Airflow: 4500 @ 12" W.G.

Filter Cartridges: Vertical Design:
Pleat Lock A15 – MERV15 (standard)
Endurex B16 – MERV16 (optional)

Filter Quantity: (6) **Filter Size:** 14" Diameter x 52" Long

Media Area: 2,790 ft²

Compressed Air Requirements: 1" NPT Supply
Maintenance Pulse @ 30 second intervals – 8.00 scfm
Online Pulse @ 30 second intervals – 8.00 scfm

Construction: 3/16" to 11 ga. Steel, fully welded
Nema 4X - Filter Door & Control Panel Enclosure construction

Warranty: 15 year on cabinet, 5 years on components
(see Warranty Document for details)

Voltage: 480/3/60 Standard; 208/230/575/3/60 Optional

Pulse Valves: (6) 1" Electronically Actuated Solenoid

Filter/Regulator: Included

Motor Starter/Disconnect: Included

Installation Hardware: Included
(Concrete anchors, duct sealant & various hardware)

Features and Options:

Dust Containment Options:

- 20 Gallon Drum:** (1), legs, hopper and drum lid
- 55 Gallon Drum:** (1), legs, hopper and drum lid (standard)

Convenience Options:

SuperSeal Hopper Gate: Empty drum while collector is running

Electric / Controls:

- Voltage:** 480/3/60 Standard
208/230/575/3/60 Optional
- ePad:** PLC with (3.5") HMI Screen (standard)

Outdoor Installation:

Outdoor Full Cover (option)

Regulatory:

- UL Listed Controls:** ePad
- CSA Certification:** Optional, meets Canadian regulations

Energy Savings:

Auto Start - Standard

eDrive - Option: Automatically adjusts the airflow via a flow monitor and VFD to extend filter life and reduce energy consumption by up to 30%. Maintains consistent airflow throughout the life of the filters.

Safety:

Noise Attenuation Option:

– Full Acoustical Silencer Plenum (covers top of collector)

SafeSensor: Clean Air Monitor (standard)

Delta3 Spark Arrestance Plenum (standard)

Fire Suppression Options:

FM200 - Supprex 200 Premium Fire Suppression System w/Damper Sprinkler Head in Filter Cabinet

Explosion Vents: Required when cutting aluminum and other explosive materials. Contact Factory for more details.

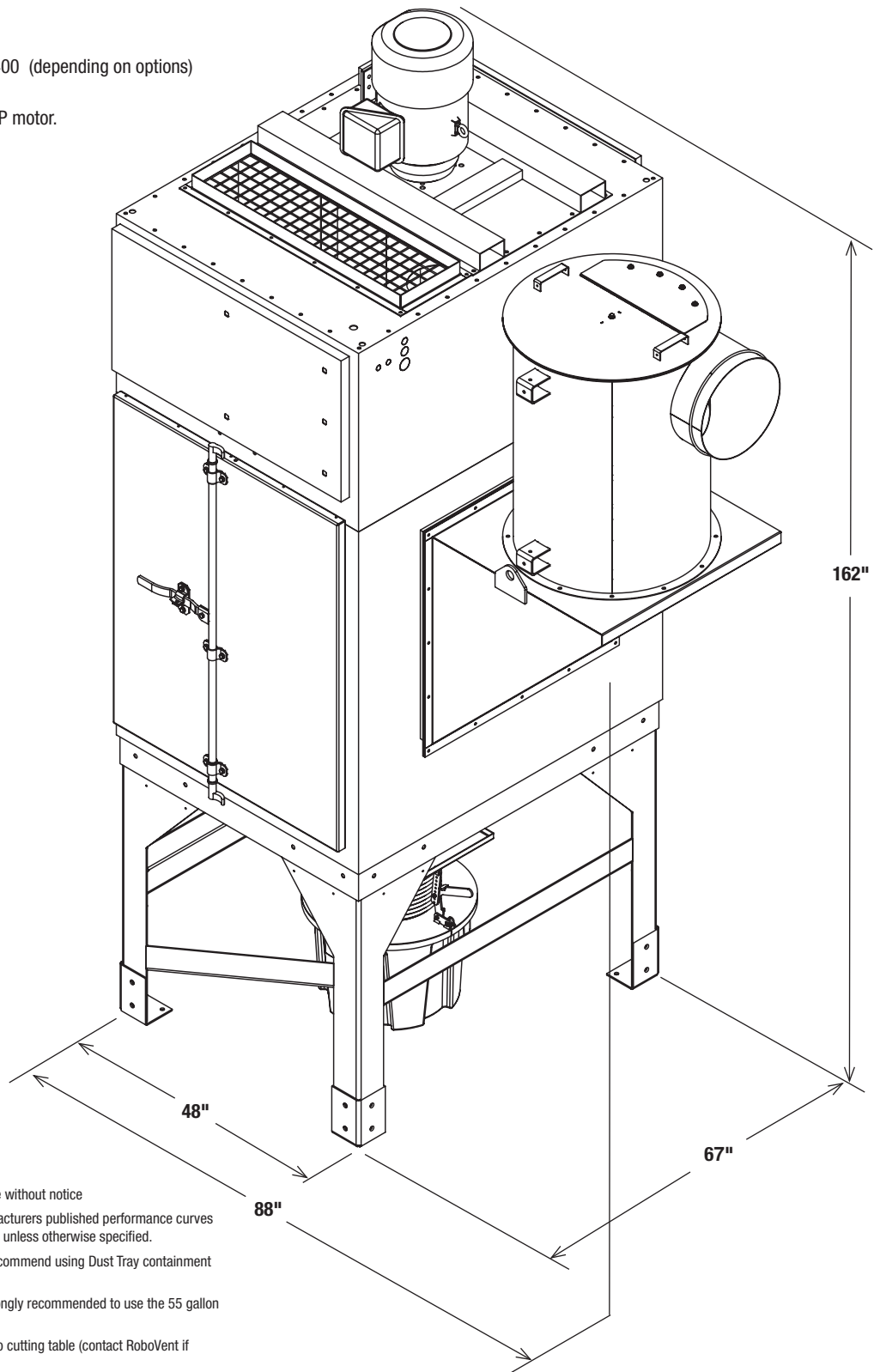
HEPA After Filter Plenums (option)

DT4-6-4500-15

Overall Weight (Lbs): 2,800 - 3,400 (depending on options)

Door Clearance: 47" Minimum

Note: Overall height includes 15 HP motor.



- All specifications are subject to change without notice
- All CFM ratings are based upon manufacturers published performance curves at specific Inches of Water Gauge (WG) unless otherwise specified.
- RoboVent Product Group DOES NOT recommend using Dust Tray containment on High Air-to-Cloth applications.
- For heavy loading applications it is strongly recommended to use the 55 gallon drum containment option
- 20' Maximum distance from collector to cutting table (contact RoboVent if longer duct run is necessary)

RoboVent[®]

37900 Mound Road Sterling Heights, Michigan 48310 586.698.1800 586.698.1801 : fax

WWW.ROBOVENT.COM • 888.ROBOVENT

©2020 RoboVent 02/2020

| REV | DESCRIPTION | DATE | DESIGNER |
|-----|--|------------|--------------|
| 0 | Drawing Created | 10/30/2019 | Czalupski |
| 1 | Updated filter part number | 11/4/2019 | Czalupski |
| 2 | Added compressed air note | 11/25/2019 | Czalupski |
| 3 | Updated notes | 12/3/2019 | Czalupski |
| 4 | Updated notes | 12/24/2019 | Czalupski |
| 5 | Replaced the 16" Delta 3,UTM with a 14". | 2/20/2020 | KVempati |
| 6 | UPDATED TO HLL | 2/27/2020 | KJAKUSZANIEK |
| 7 | ADDED IN ANGLE FLANGE | 3/2/2020 | KJAKUSZANIEK |

MODEL#: DT4-6-4500-15

INCLUDES:

AIRFLOW: 4500 CFM @ 12" W.G.

MOTOR HP: 15HP (21 FLA)

(6) PL2-14D52-A15-SF FILTERS

55 GALLON DUST CONTAINMENT DRUM

16" DELTA3 SPARK ARRESTANCE FLANGED INTAKE

16" MANUAL DAMPER (FLANGED END/ROLLED END, NOT SHOWN)

PAINTED PLASER BLACK

MOTOR STARTER

SAFE SENSOR SMOKE DETECTOR

SYSTEM REQUIRES 16 SCFM OF COMPRESSED AIR AT 85 PSI

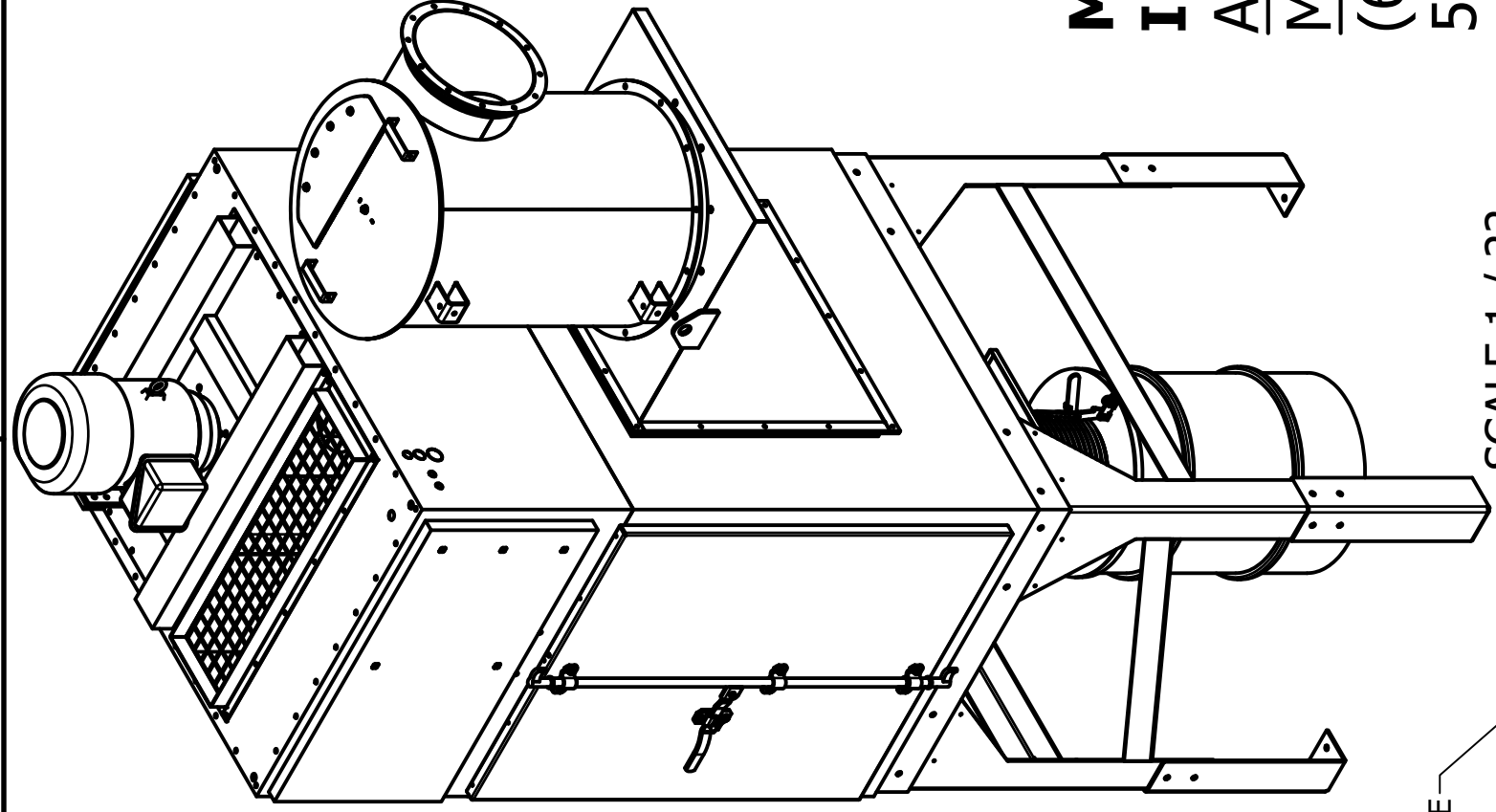
NOTES:

OPTIONAL OUTDOOR COVER

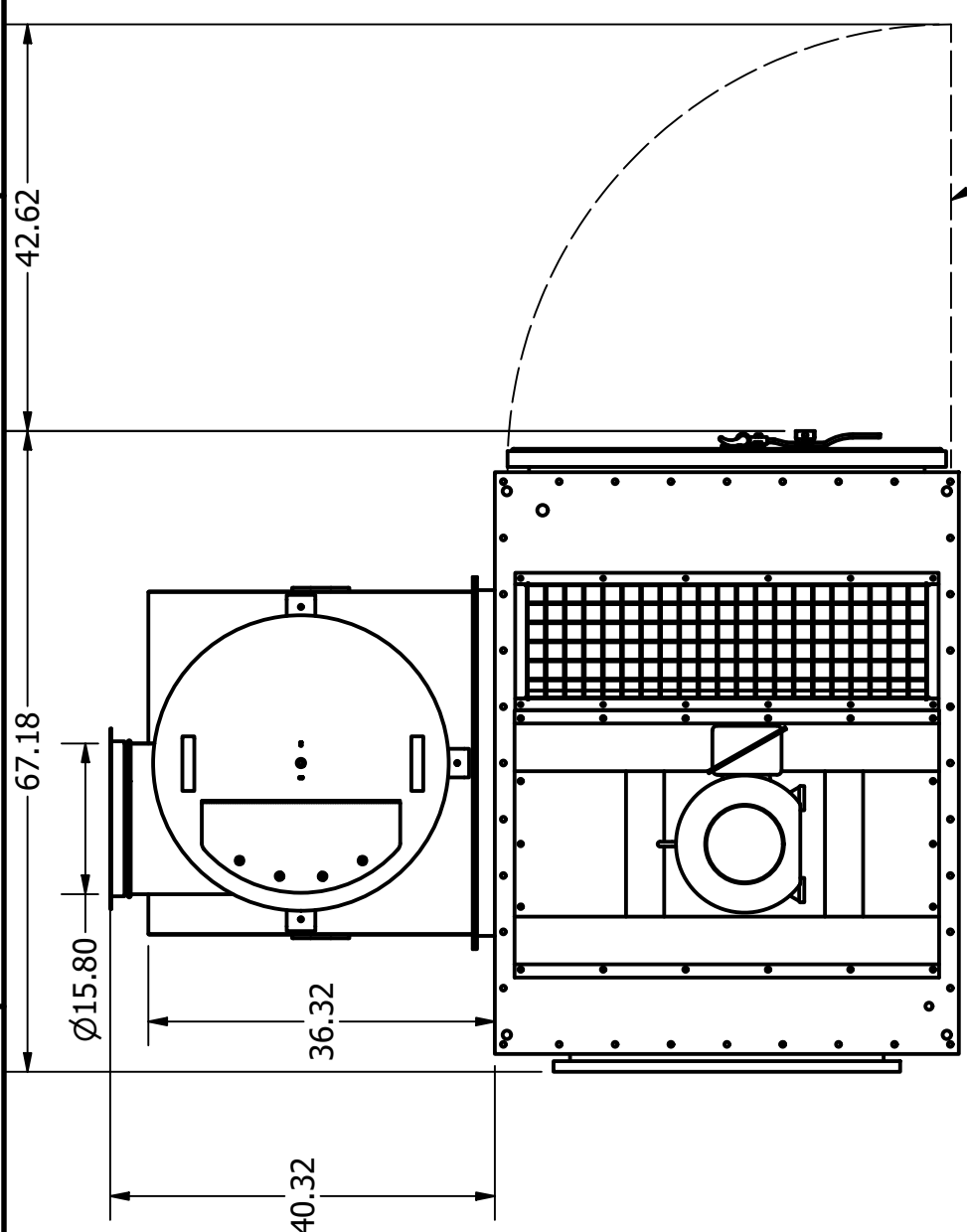
ADDS 11.4" TO OVERALL HEIGHT

20 GALLON HOPPER AND SHORT LEGS AVAILABLE AS OPTION, DECREASES OVERALL HEIGHT BY APPROXIMATELY 18.75".

20' MAX. DISTANCE FROM CUTTING TABLE TO COLLECTOR (PLEASE CONTACT ROBOVENT IF LONGER RUN IS DESIRED)



SCALE 1 / 22



SECTION A-A
(Foot Pad Detail)

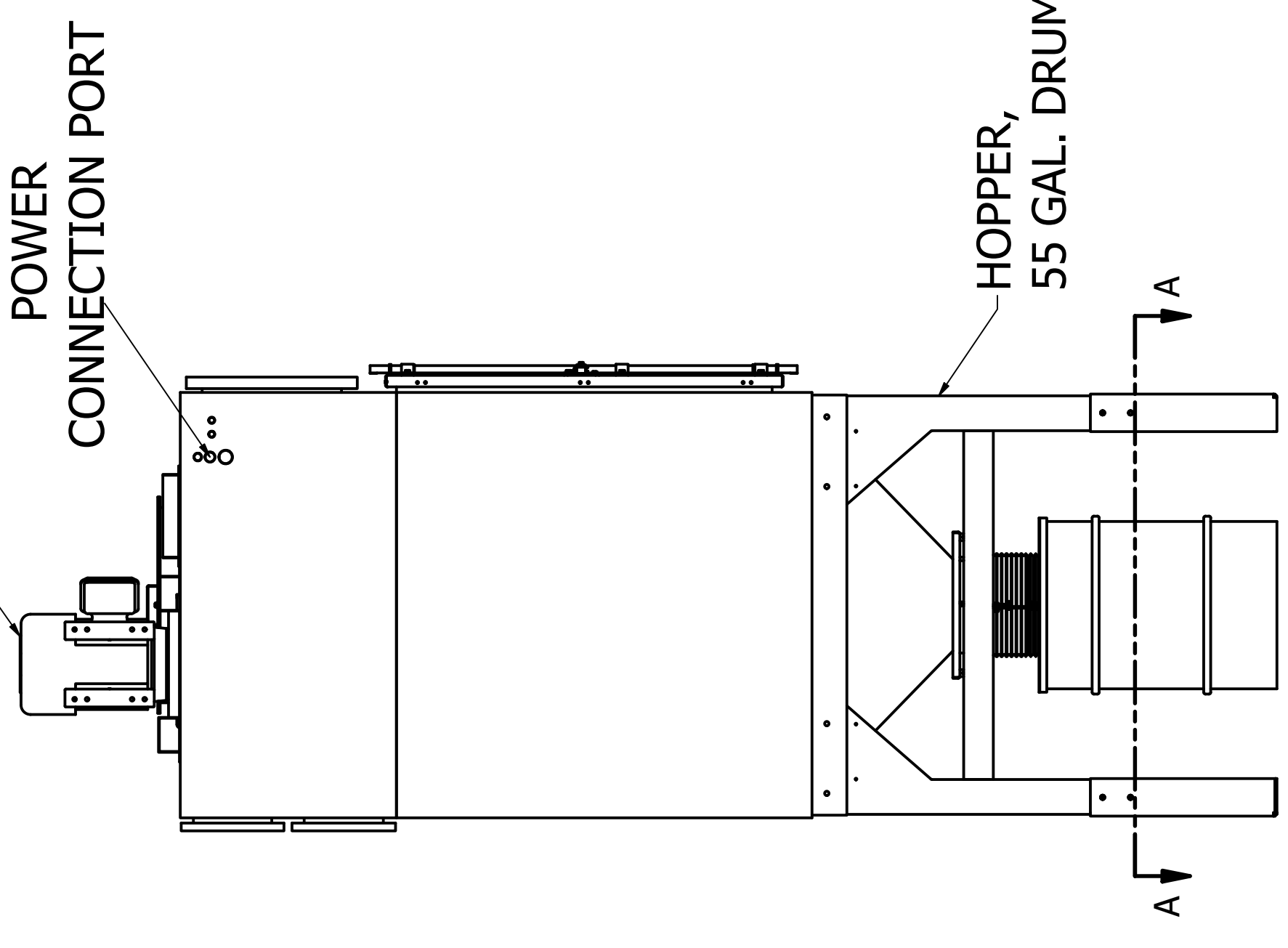
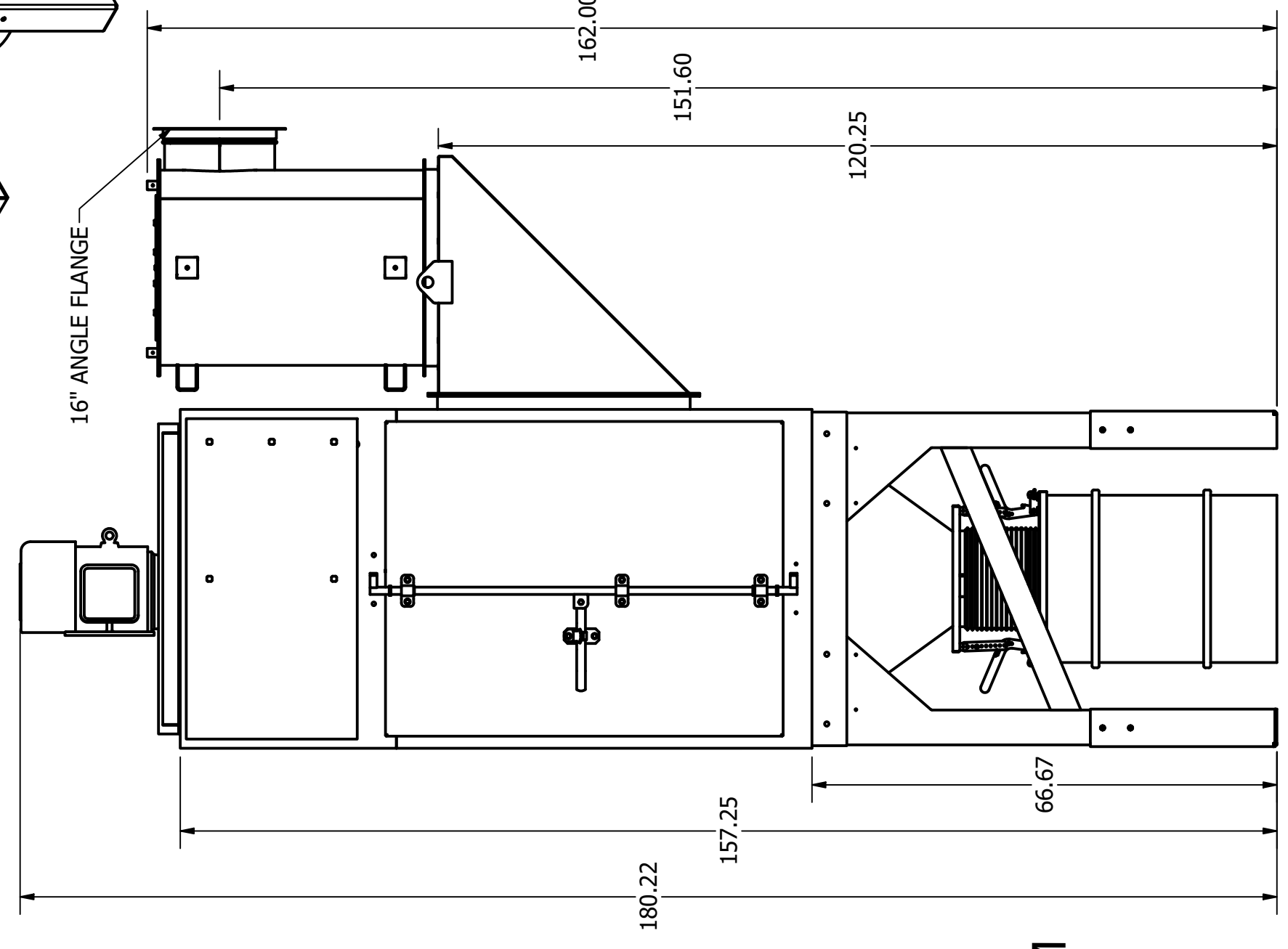
Door Swing

COMPRESSED AIR CONNECTION
1" NPT, WITH SUPPLIED
FILTER REGULATOR

15HP, 60HZ, 460V

POWER
CONNECTION PORT

HOPPER,
55 GAL. DRUM



| | | | |
|---|--|--|--|
| | | TITLE DT4-6-4500-15 | |
| DWG NO. DT4-6-4500-15-ASM | | SCALE 1 / 20 | |
| DATE 10/30/2019 | | DRAWN BY Czalupski | |
| MATERIAL SPEC | | 3RD ANGLE PROJECTION | |
| MATERIAL TYPE ASTM A513 CS TYPE B HOT ROLLED SHEETS | THICKNESS < .1875 | TOLERANCE ANGLE ± 1° | |
| MATERIAL TYPE ASTM A513 CS TYPE B HOT ROLLED SHEETS | THICKNESS > .1875 | UNLESS OTHERWISE SPECIFIED ALL DIMENSIONS IN INCHES(MM) | |
| POWDER COAT SPEC | | PROPRIETARY AND CONFIDENTIAL | |
| ALL POWDER COATED COMPONENTS MUST MEET ANMA 2603 STANDARDS | | ANY REPRODUCTION IN PART OR IN WHOLE WITHOUT THE WRITTEN PERMISSION OF ROBOVENT® IS STRICTLY PROHIBITED | |
| APPROVAL SIGNATURES | | DATE | |
| ENGINEERING (PRINT) _____ | <input type="checkbox"/> APPROVED <input type="checkbox"/> REJECTED | PROJECT MANAGER (PRINT) _____ | <input type="checkbox"/> APPROVED <input type="checkbox"/> REJECTED |
| PROJECT MANAGER (PRINT) _____ | <input type="checkbox"/> APPROVED <input type="checkbox"/> REJECTED | CUSTOMER (PRINT) _____ | <input type="checkbox"/> APPROVED <input type="checkbox"/> REJECTED |

| | | | |
|---|--|--|--|
| | | TITLE DT4-6-4500-15 | |
| DWG NO. DT4-6-4500-15-ASM | | SCALE 1 / 20 | |
| DATE 10/30/2019 | | DRAWN BY Czalupski | |
| MATERIAL SPEC | | 3RD ANGLE PROJECTION | |
| MATERIAL TYPE ASTM A513 CS TYPE B HOT ROLLED SHEETS | THICKNESS < .1875 | TOLERANCE ANGLE ± 1° | |
| MATERIAL TYPE ASTM A513 CS TYPE B HOT ROLLED SHEETS | THICKNESS > .1875 | UNLESS OTHERWISE SPECIFIED ALL DIMENSIONS IN INCHES(MM) | |
| POWDER COAT SPEC | | PROPRIETARY AND CONFIDENTIAL | |
| ALL POWDER COATED COMPONENTS MUST MEET ANMA 2603 STANDARDS | | ANY REPRODUCTION IN PART OR IN WHOLE WITHOUT THE WRITTEN PERMISSION OF ROBOVENT® IS STRICTLY PROHIBITED | |
| APPROVAL SIGNATURES | | DATE | |
| ENGINEERING (PRINT) _____ | <input type="checkbox"/> APPROVED <input type="checkbox"/> REJECTED | PROJECT MANAGER (PRINT) _____ | <input type="checkbox"/> APPROVED <input type="checkbox"/> REJECTED |
| PROJECT MANAGER (PRINT) _____ | <input type="checkbox"/> APPROVED <input type="checkbox"/> REJECTED | CUSTOMER (PRINT) _____ | <input type="checkbox"/> APPROVED <input type="checkbox"/> REJECTED |