

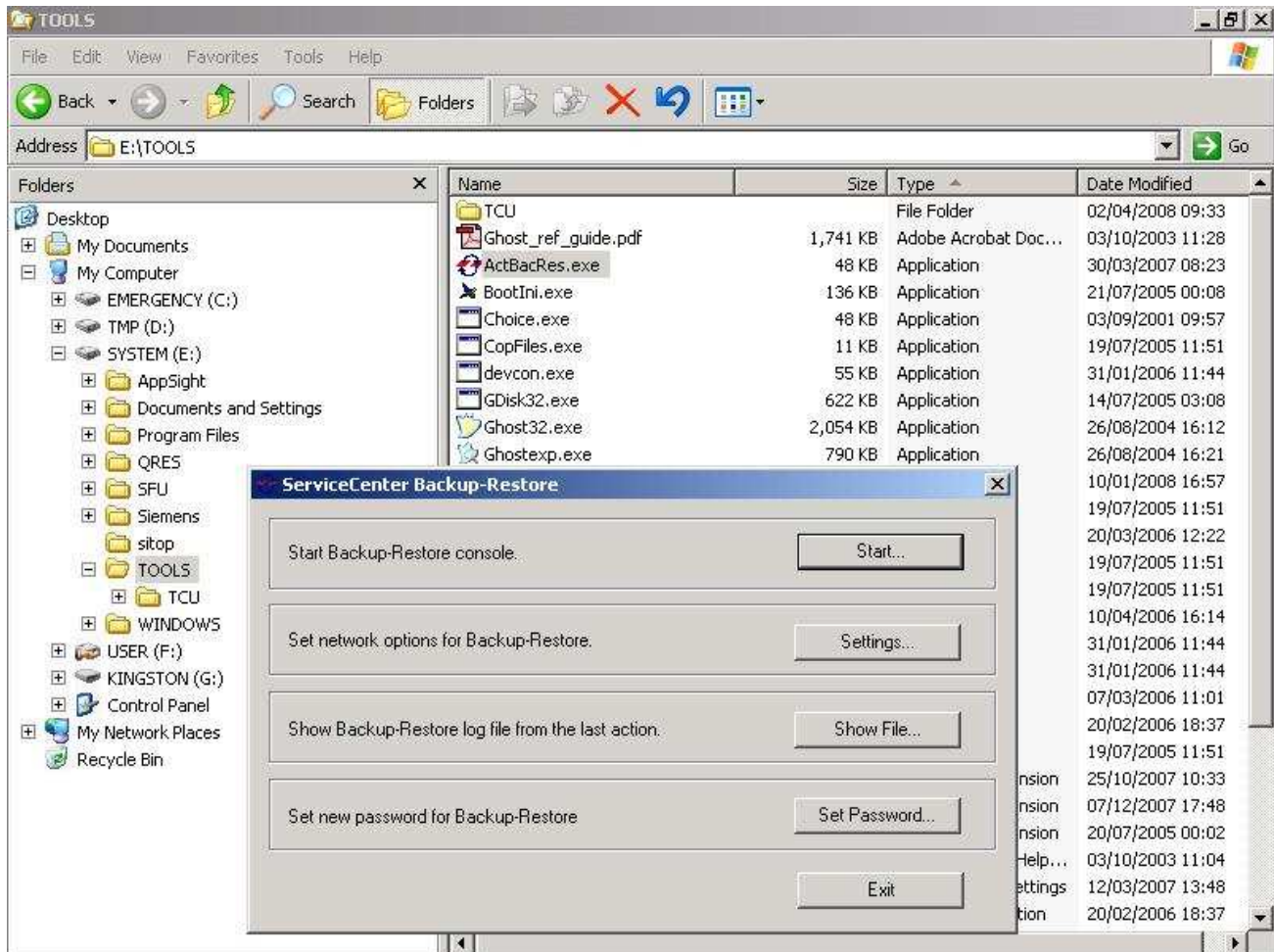
Creating a Ghost for an 840Di solution line

NOTE: If you are creating a ghost you will want to delete all the files in D:\Images

To get to the Ghosting software, there may be an icon on the desktop that looks like this:

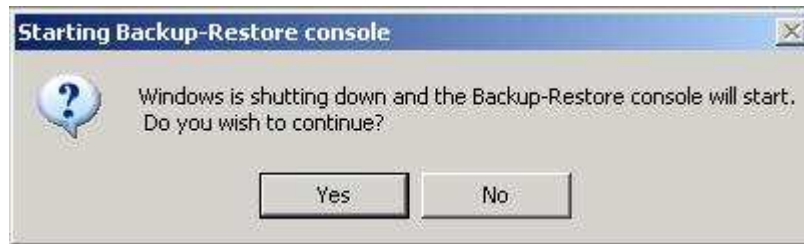


If no icon exists, open the E:\ drive and then open the TOOLS folder. The Ghosting software is labeled ActBacRes.exe. Double click on the ActBacRes.exe and a ServiceCenter Backup-Restore dialog will open up. Press the “Start” button.



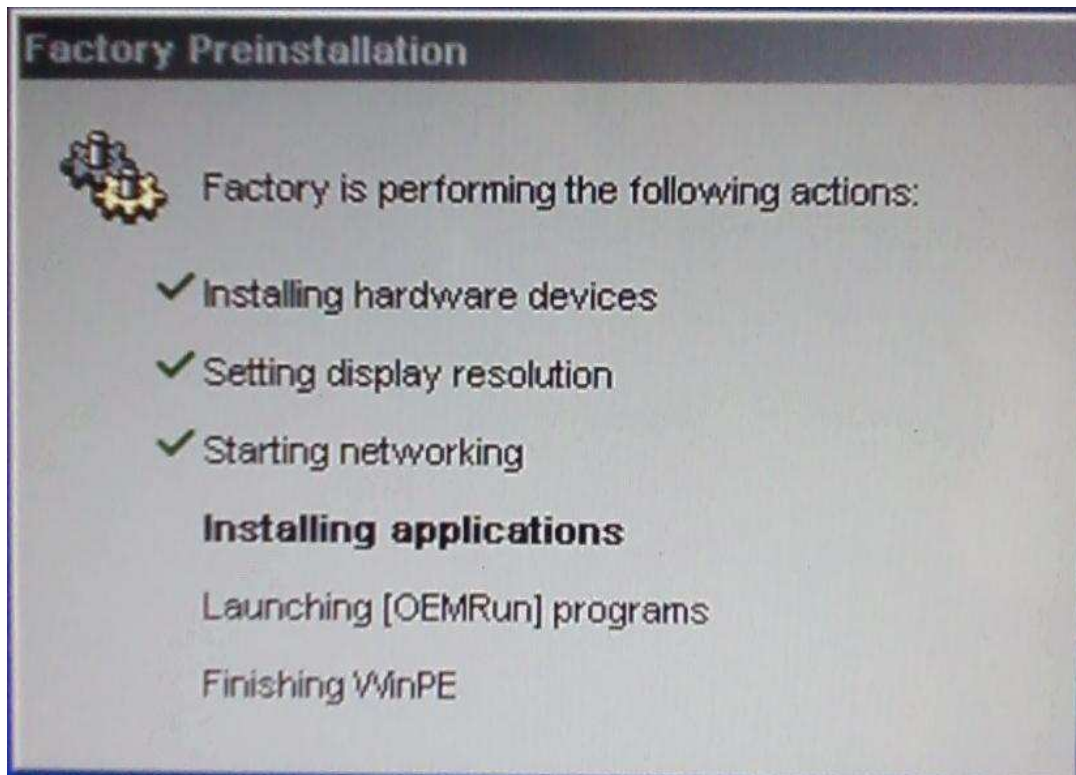
Creating a Ghost for an 840Di solution line

You will get a Starting Backup-Restore console dialog asking “Windows is shutting down and the Backup-Restore console will start. Do you wish to continue?” Press the “**Yes**” button.



The Windows environment will shut down and the ServiceCenter will start up on it’s own (nothing needs to be done until you get the next dialog). This takes about a minute or so – be patient!

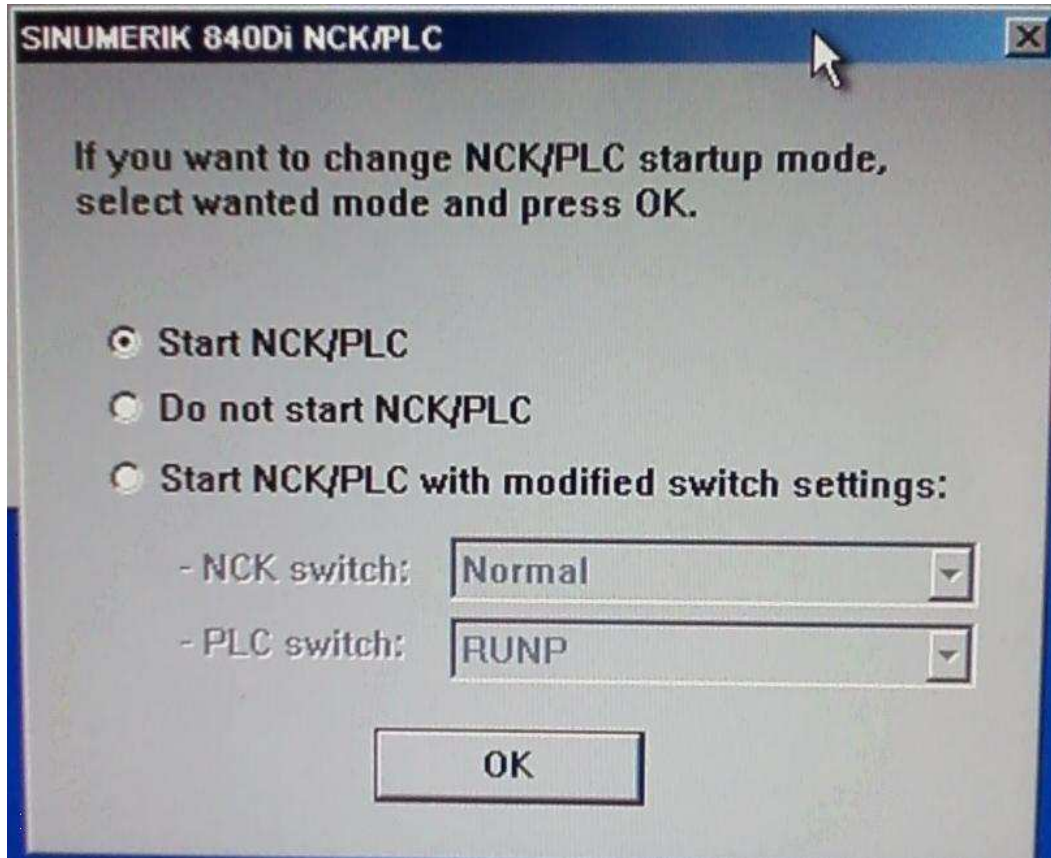
The 840Di will run through some installations:



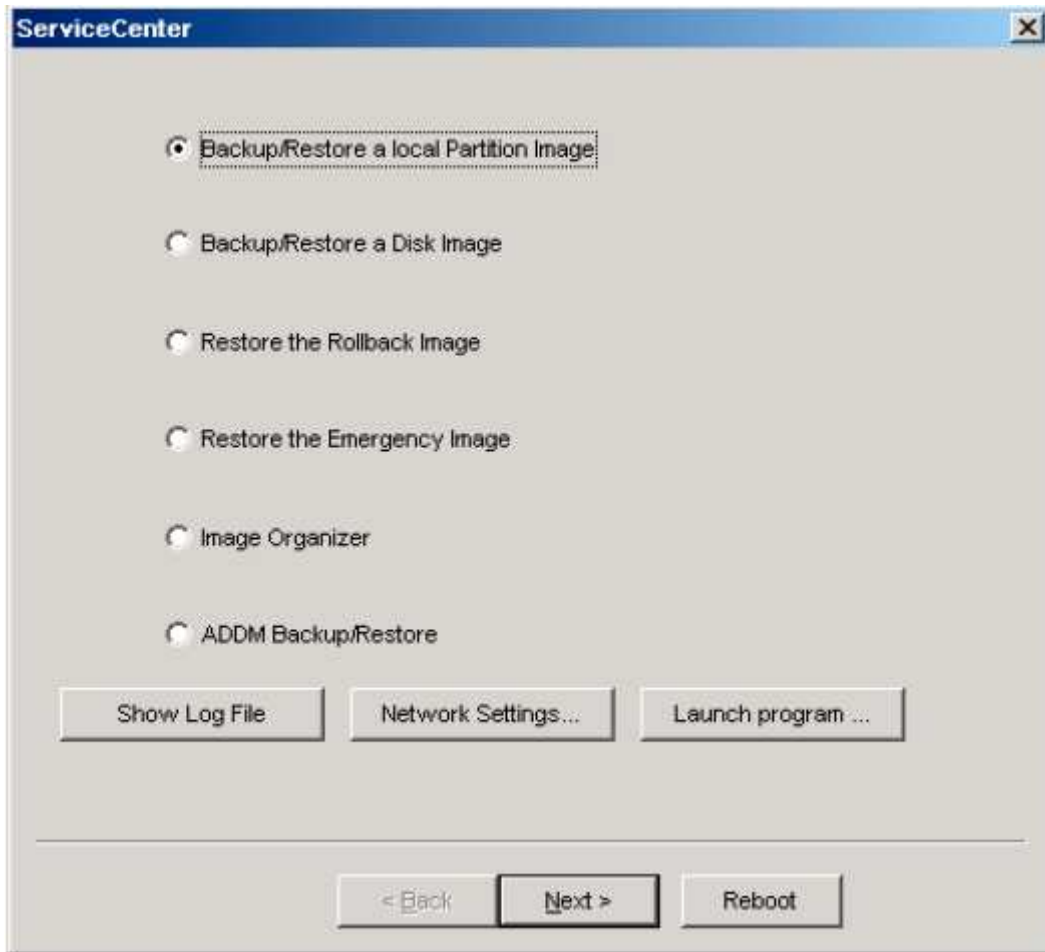
840Di sL Ghosting Service Notes:

Creating a Ghost for an 840Di solution line

When the 840Di gets to “Installing applications”, you will get a SINUMERIK 840Di NCK/PLC dialog asking “If you want to change NCK/PLC startup mode, select wanted mode and press OK.” Select “Start NCK/PLC” and press OK.

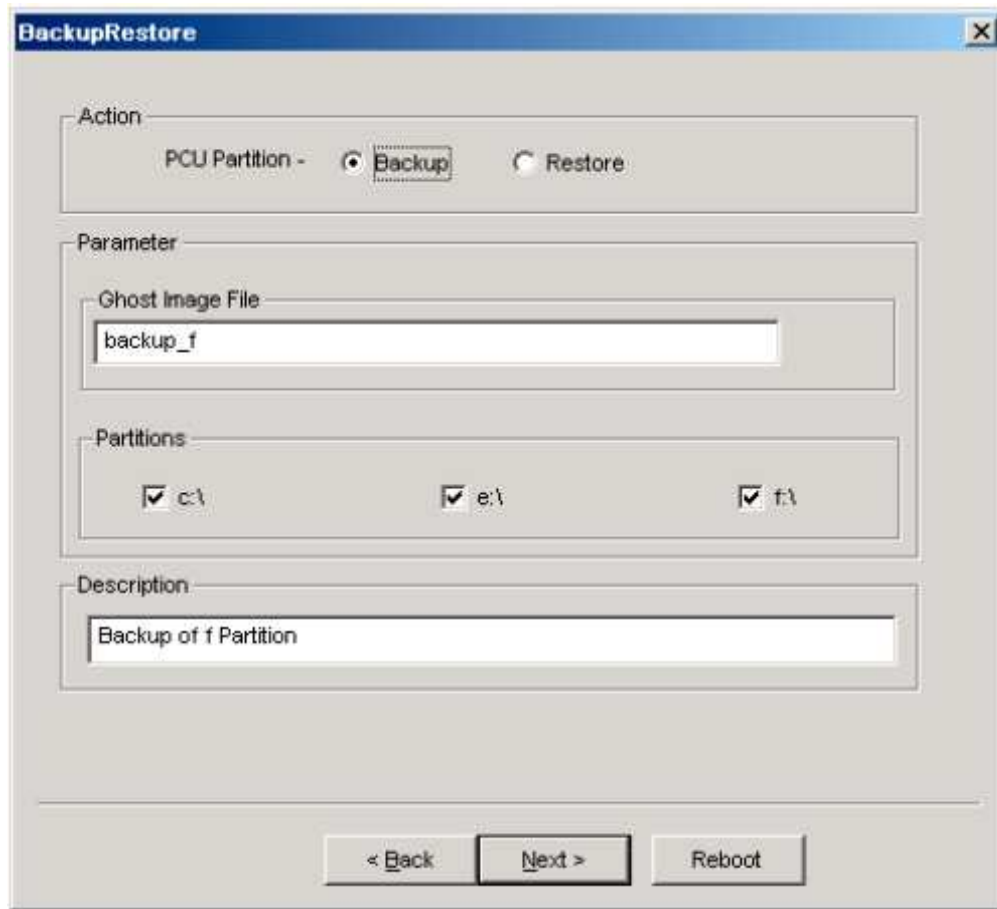


The ServiceCenter dialog will open up:



Select the **“Backup/Restore a local Partition Image”** and press the **“Next”** button.

The BackupRestore dialog will open up:



If your creating a ghost:

Select the “**Backup**” and enter a Ghost Image File name (i.e. machine_date: Vektor2000_02_26_10).

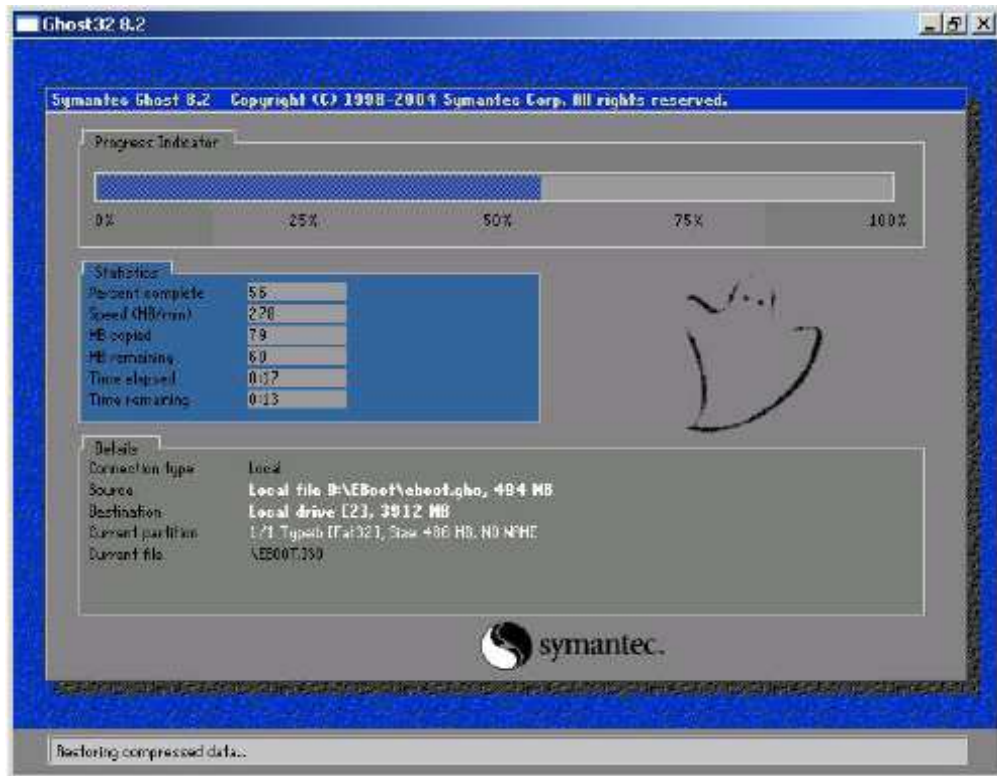
Make sure Partitions “**c:** , **e:** , and **f:**” are selected. You can leave the Description blank. Press the “**Next**” button. Then press the “**Finish**” button.

If your reading in a ghost:

Select the “**Restore**” and the Ghost Image File name will be grayed out. The ghost present in D:\Images will automatically selected to be read in. Press the “**Next**” button. Then press the “**Finish**” button.

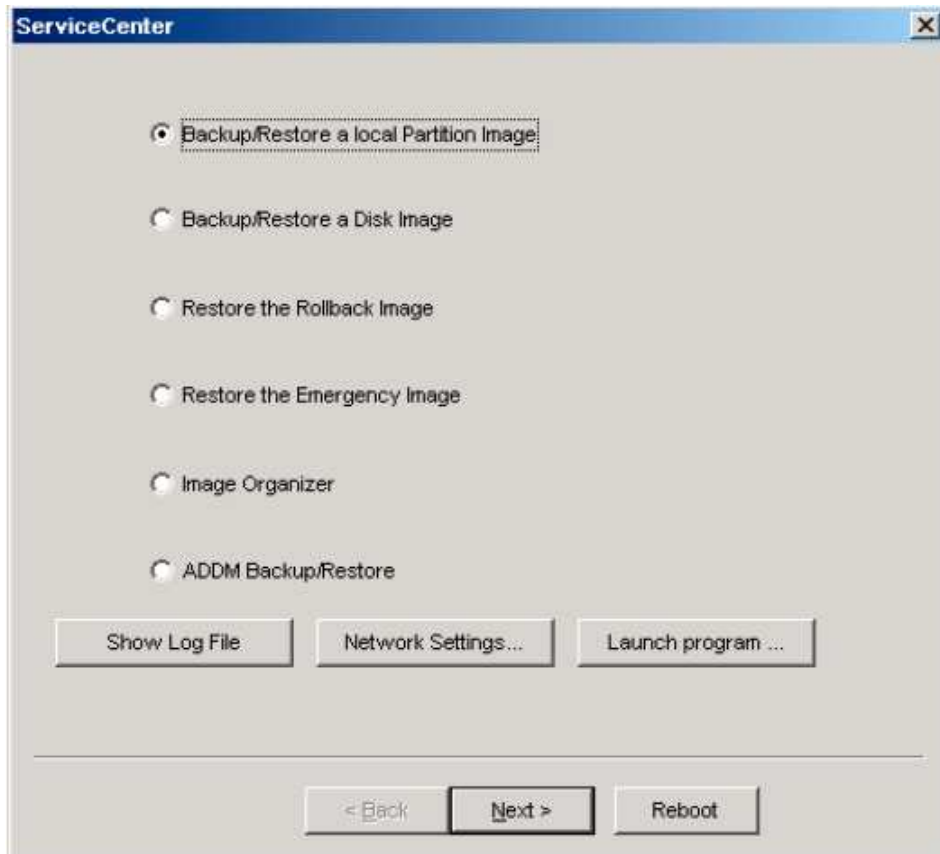
Creating a Ghost for an 840Di solution line

When the ghosting is active, the screen will look as follows:



Creating a Ghost for an 840Di solution line

When the ghosting is complete, the ServiceCenter dialog will open again. Press the “**Reboot**” button.



If you read in a ghost:

When you reboot, a SINUMERIK 840Di NCK/PLC dialog will open and ask if you want to use the user data from the MCI card or from the harddisk. Press the “Yes” button.



You will have to read-in the NC/PLC/Drive archives. Please refer to the “Archiving 840Di sL.doc”

If you created a ghost:

When you reboot, the 840Di will return to the windows environment.

When the 840Di returns to the windows environment, you may be asked to restart the computer. Instead of doing a “restart,” shut down the pc and cycle power, this allows the drives to maintain happiness 😊