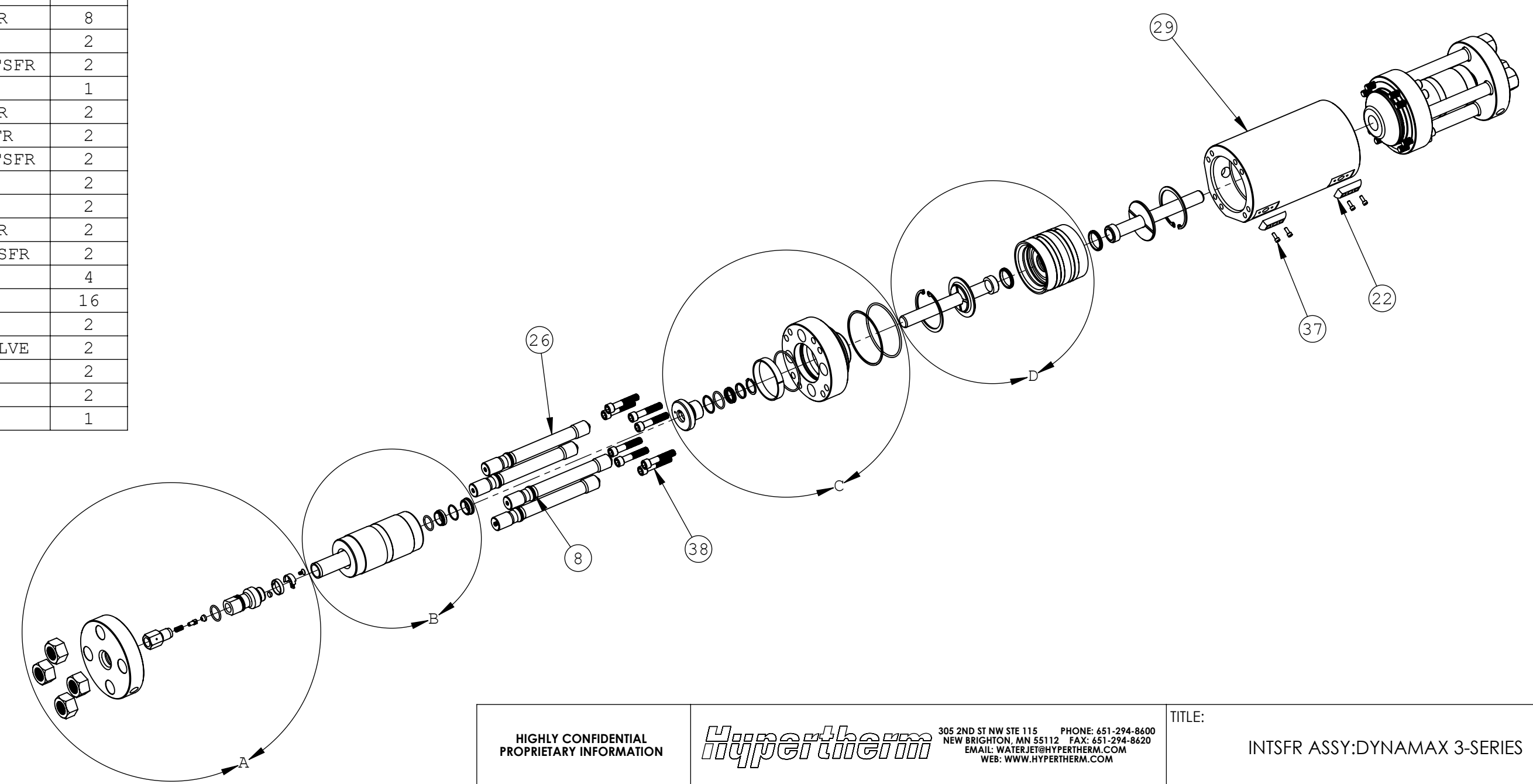
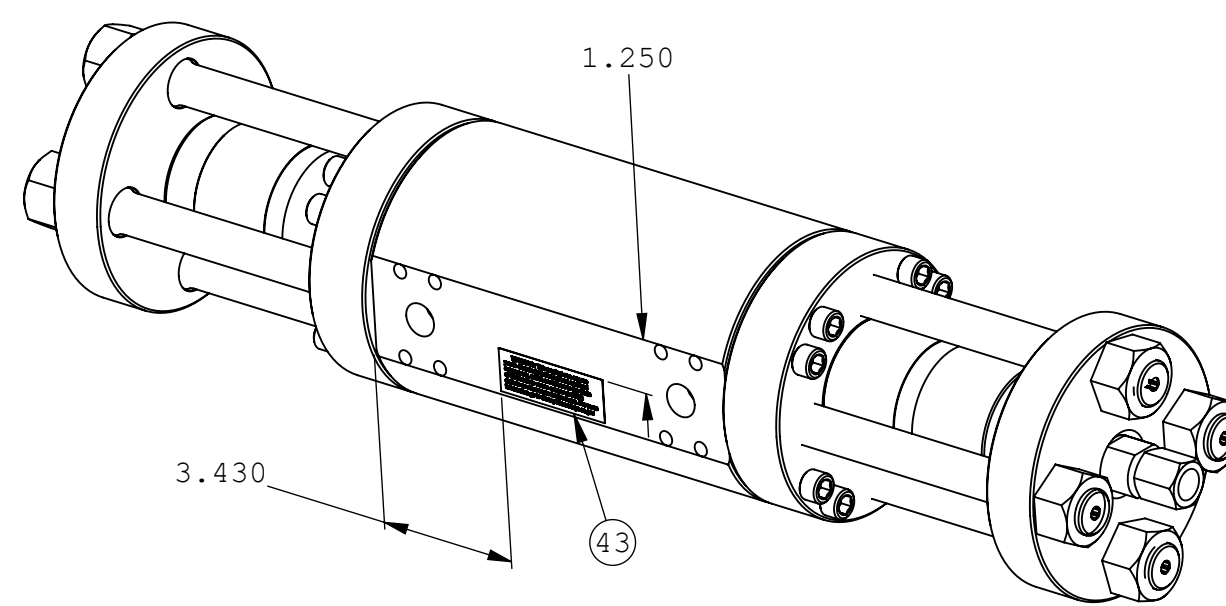


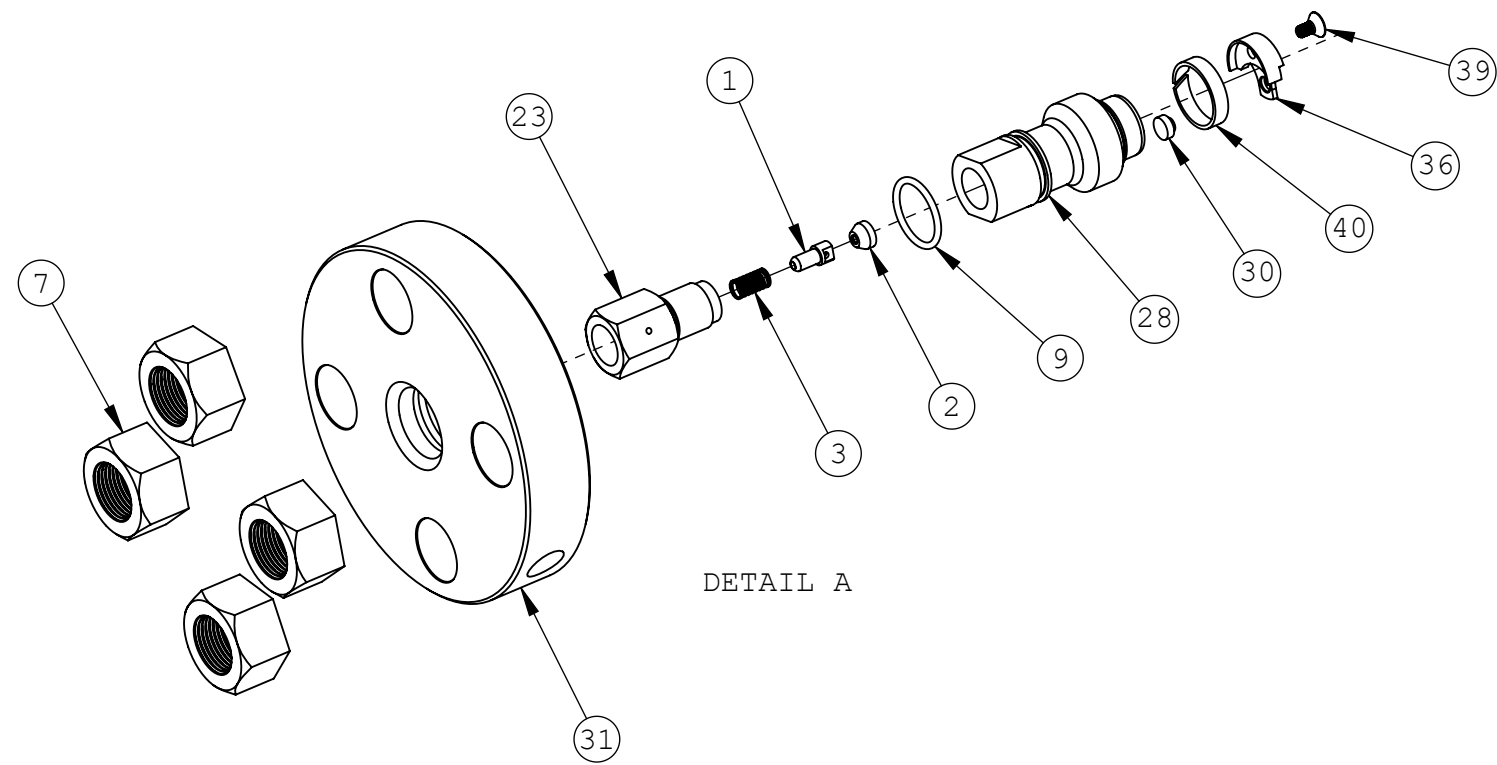
| ITEM NO. | DESCRIPTION | QTY. |
|----------|---|------|
| 1 | PPT:HP | 2 |
| 2 | SEAT:HP | 2 |
| 3 | PPT SPR:HP | 2 |
| 4 | PLGR:.875 DIA FL | 2 |
| 4.1 | PLGR:.875 DIA FL | 1 |
| 4.2 | RTNR PLGR:FL | 1 |
| 5 | PLGR RTNR | 2 |
| 6 | SPCR:ROD SEAL | 2 |
| 7 | HN:1-14 YZ GD8 | 8 |
| 8 | O-RING:70 DURO BUNA -021 | 8 |
| 9 | O-RING:70 DURO -120 | 2 |
| 10 | O-RING:70 DURO BUNA -122 | 2 |
| 11 | O-RING:70 DURO BUNA -150 | 2 |
| 12 | O-RING:70 DURO -241 | 2 |
| 13 | O-RING:BACKUP -122 | 2 |
| 14 | O-RING:CTR BACKUP -241 | 2 |
| 15 | SPR:ENERGIZED SEAL | 2 |
| 16 | WEAR RING:4" OD .125/.123 THK .375 WIDE | 2 |
| 17 | CAPPED T-SEAL:PSTN SEAL | 1 |
| 18 | T-SEAL:TSR-218 | 2 |
| 19 | SNAP RING:INTERNAL INVERTED LUGS | 2 |
| 20 | SNAP RING:FL PSTN | 2 |
| 21 | PSTN LC | 1 |
| 22 | PROX SW FLG LC | 2 |
| 23 | ADPTR:OUTPUT DYNAMAX 3-SERIES INTSFR | 2 |
| 24 | END CAP:HYD DYNAMAX 3-SERIES INTSFR | 2 |
| 25 | SEAL HSG:DYNAMAX 3-SERIES INTSFR | 2 |
| 26 | THRD STUD:DYNAMAX 3-SERIES INTSFR | 8 |
| 27 | CYL:HP DYNAMAX 3-SERIES INTSFR | 2 |
| 28 | CHK VALVE BODY:DYNAMAX 3-SERIES INTSFR | 2 |
| 29 | CYL:HYD DYNAMAX 3-SERIES INTSFR | 1 |
| 30 | PPT:INLET DYNAMAX 3-SERIES INTSFR | 2 |
| 31 | END CAP:HP DYNAMAX 3-SERIES INTSFR | 2 |
| 32 | SEAL:HP BACKUP DYNAMAX 3-SERIES INTSFR | 2 |
| 33 | HOOP:DYNAMAX 3-SERIES INTSFR | 2 |
| 34 | SEAL:HP DYNAMAX 3-SERIES INTSFR | 2 |
| 35 | SPCR TUBE:DYNAMAX 3-SERIES INTSFR | 2 |
| 36 | HSG:INLET PPT DYNAMAX 3-SERIES INTSFR | 2 |
| 37 | SHCS:10-32X0.50 SST | 4 |
| 38 | SHCS:7/16-20X2.25P BO | 16 |
| 39 | FHSCS:10-32X0.38 VENTED SST | 2 |
| 40 | GUIDE RING:DYNAMAX 3-SERIES CHK VALVE | 2 |
| 41 | GUIDE RING:DYNAMAX 3-SERIES CYL | 2 |
| 42 | O-RING:70 DURO EPDM -119 | 2 |
| 43 | LBL:PROP 65 LONG 2.8" x 1" | 1 |

| REVISIONS | | | | | |
|-----------|-------|----------|-------|----------|----------|
| REV | ECO | DATE | DRAWN | DATE | APPROVED |
| C | 32398 | 07/02/21 | MWW | 07/14/21 | NK |

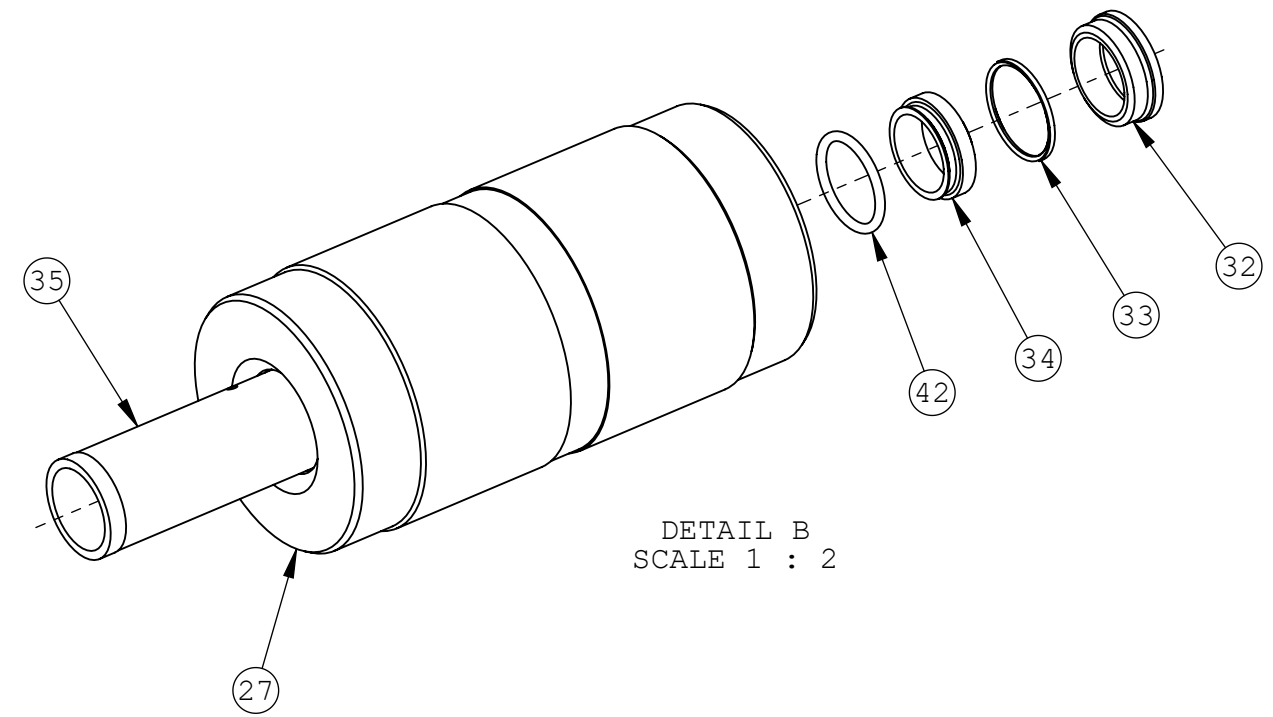


NOTES:
1. SEE PAGE 2 FOR DETAIL VIEWS

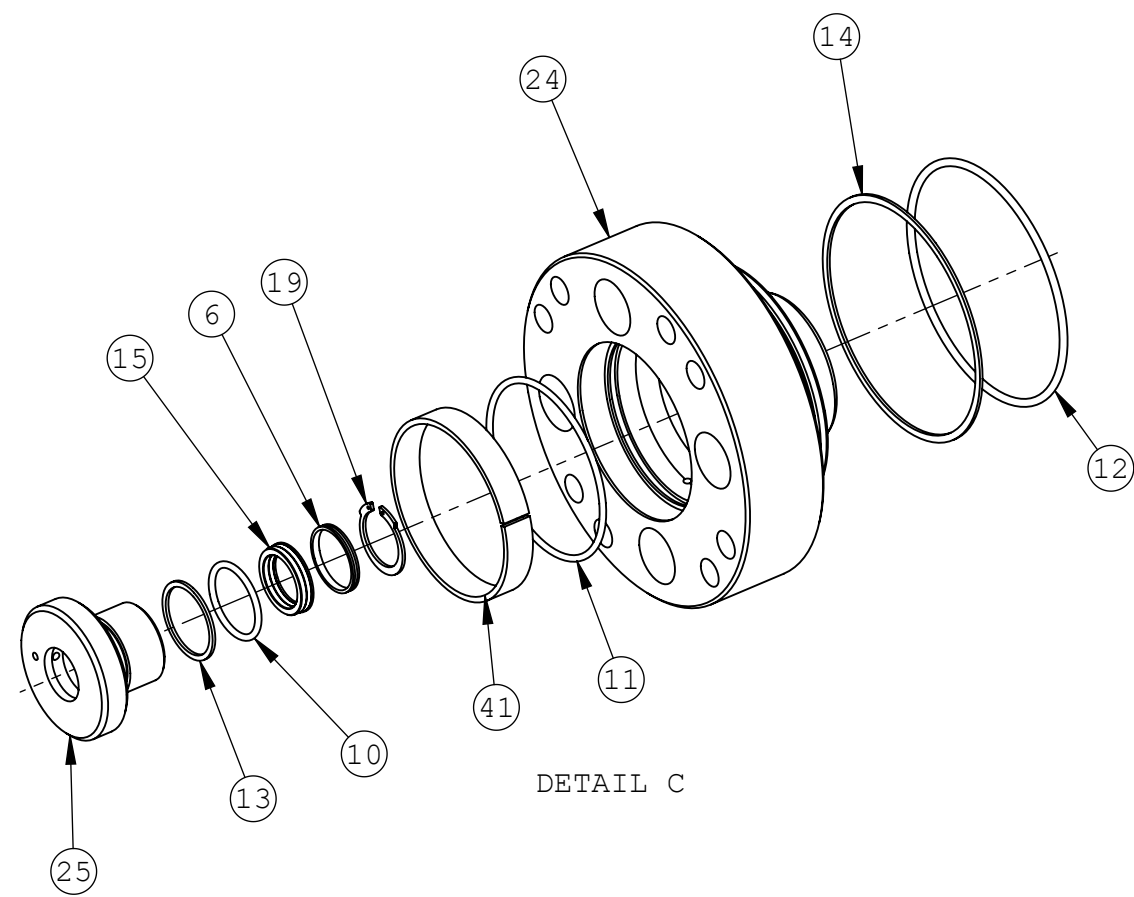
| <p>HIGHLY CONFIDENTIAL PROPRIETARY INFORMATION</p> <p>THIS DRAWING AND ALL INFORMATION CONTAINED THEREON IS CONSIDERED PROPRIETARY AND MAY NOT BE USED FOR MANUFACTURING OR FABRICATION PURPOSES WITHOUT PERMISSION FROM HYPERTHERM, INC.</p> | <p>Hypertherm</p> <p>305 2ND ST NW STE 115 NEW BRIGHTON, MN 55112 PHONE: 651-294-8600 FAX: 651-294-8620 EMAIL: WATERJET@HYPERTHERM.COM WEB: WWW.HYPERTHERM.COM</p> | | <p>TITLE: INTSFR ASSY:DYNAMAX 3-SERIES</p> | | | | | | | | | | | | | | | | | | | | | | | | | |
|--|---|--|--|------|----------|----------|----------|----------------|---------|--|------------|-----------|--|---------------|--|-------|--------|--------|--------|-----|---|---|------|----------|-----|---|---------|---|
| | <p>-TOLERANCES- UNLESS OTHERWISE SPECIFIED DIMENSIONS IN INCHES</p> <p>ANGULAR: MACH ± 1 BEND ± 1 ONE PLACE DECIMAL ± .05 TWO PLACE DECIMAL ± .015 THREE PLACE DECIMAL ± .005 BREAK AND DEBURR ALL EDGES .015 MAX</p> | <table border="1"> <tr><th>NAME</th><th>DATE</th><th>MATERIAL</th></tr> <tr><td>DRAWN DO</td><td>10/19/18</td><td>SEE PARTS LIST</td></tr> <tr><td>CHECKED</td><td></td><td>HARDNESS -</td></tr> <tr><td>ENG APPR.</td><td></td><td>WEIGHT 123.57</td></tr> </table> | NAME | DATE | MATERIAL | DRAWN DO | 10/19/18 | SEE PARTS LIST | CHECKED | | HARDNESS - | ENG APPR. | | WEIGHT 123.57 | <table border="1"> <tr><th>SHEET</th><th>SCALE:</th><th>FINISH</th></tr> <tr><td>1 OF 2</td><td>1:8</td><td>-</td></tr> </table> | SHEET | SCALE: | FINISH | 1 OF 2 | 1:8 | - | <table border="1"> <tr><th>SIZE</th><th>DWG. NO.</th><th>REV</th></tr> <tr><td>B</td><td>1-18314</td><td>C</td></tr> </table> | SIZE | DWG. NO. | REV | B | 1-18314 | C |
| | NAME | DATE | MATERIAL | | | | | | | | | | | | | | | | | | | | | | | | | |
| | DRAWN DO | 10/19/18 | SEE PARTS LIST | | | | | | | | | | | | | | | | | | | | | | | | | |
| CHECKED | | HARDNESS - | | | | | | | | | | | | | | | | | | | | | | | | | | |
| ENG APPR. | | WEIGHT 123.57 | | | | | | | | | | | | | | | | | | | | | | | | | | |
| SHEET | SCALE: | FINISH | | | | | | | | | | | | | | | | | | | | | | | | | | |
| 1 OF 2 | 1:8 | - | | | | | | | | | | | | | | | | | | | | | | | | | | |
| SIZE | DWG. NO. | REV | | | | | | | | | | | | | | | | | | | | | | | | | | |
| B | 1-18314 | C | | | | | | | | | | | | | | | | | | | | | | | | | | |
| | | | | | | | | | | | | | | | | | | | | | | | | | | | | |
| | | | | | | | | | | | | | | | | | | | | | | | | | | | | |



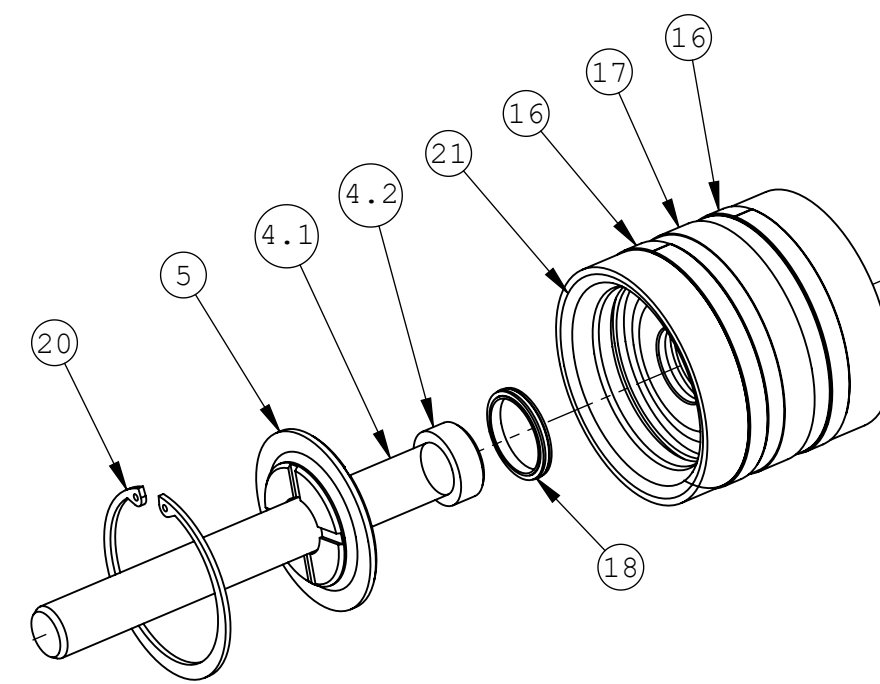
DETAIL A




DETAIL B
SCALE 1 : 2



DETAIL C



DETAIL D

| | | | | | | | | | | |
|--|---|--|--|-------------------------|--------------------------|------------------------------------|--|--------------------------|------------------------------------|-------------------------|
| <p>HIGHLY CONFIDENTIAL PROPRIETARY INFORMATION</p> <p>THIS DRAWING AND ALL INFORMATION CONTAINED THEREON IS CONSIDERED PROPRIETARY AND MAY NOT BE USED FOR MANUFACTURING OR FABRICATION PURPOSES WITHOUT PERMISSION FROM HYPER THERM, INC.</p>  <p>305 2ND ST NW STE 115 PHONE: 651-294-8600 NEW BRIGHTON, MN 55112 FAX: 651-294-8620 EMAIL: WATERJET@HYPER THERM.COM WEB: WWW.HYPER THERM.COM</p> | <p>TITLE: INTSFR ASSY:DYNAMAX 3-SERIES</p> | | | <p>SHEET 2 OF 2</p> | | <p>SCALE: 1:3</p> | | <p>FINISH -</p> | | |
| | <p>-TOLERANCES- UNLESS OTHERWISE SPECIFIED DIMENSIONS IN INCHES</p> <p>ANGULAR: MACH ± 1 BEND ± 1 ONE PLACE DECIMAL ± .05 TWO PLACE DECIMAL ± .015 THREE PLACE DECIMAL ± .005 BREAK AND DEBURR ALL EDGES .015 MAX</p> | | | <p>NAME DO</p> | <p>DATE 10/19/18</p> | <p>MATERIAL SEE PARTS LIST</p> | | <p>HARDNESS -</p> | | |
| |  | | | <p>CHECKED</p> | <p>ENG APPR.</p> | <p>WEIGHT 123.57</p> | | <p>SIZE B</p> | <p>DWG. NO. 1-18314</p> | <p>REV C</p> |
| | <p>CONFIDENTIAL</p> | | | | | | | | | |