

- 1.) REFER TO HIGH PRESSURE CONNECTION TORQUE TABLE (GRID D2) FOR ASSEMBLY OF HIGH PRESSURE FITTINGS.
- 2.) ALL MALE HIGH PRESSURE THREADS SHALL HAVE THREAD LUBRICANT APPLIED. USE SWAGelok PRODUCT: BLUE GOOP, # MS-TL-BGT
- 3.) REFER TO HIGH PRESSURE COIL INDEX TABLE (GRID D2) WHEN ASSEMBLING COILS.
- 4.) ENSURE IN-LINE THIMBLE FILTER IS INSTALLED AFTER ON-SITE LINE PURGE.
- 5.) FOR CUSTOMER SERVICE NOTES SEE SHEET 2 (GRID A8).

HIGH PRESSURE FITTINGS TORQUE SPEC			
TUBE OD (in)	CONNECTION TYPE	GLAND HEX (in)	TORQUE, (ft-lbs)
1/4	4H	5/8	25
3/8	6H	13/16	50
1/4	ANTI VIBE 4H	5/8	20

HIGH PRESSURE COIL INDEXING			
COIL PART #	REVS	AXIS	AXIS POSITION
103415	4-1/2	A1	0 DEGREES
102091	8	C	0 DEGREES

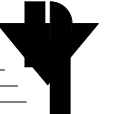
NOZZLE AND ORIFICE BY PUMP				
NOZZLE / ORIFICE	DynaMAX 550P	DynaMAX 550P	DynaMAX 350	HYPRECISION 30 HP
DIAMOND ORIFICE	0.016" (70013060)	0.014" (70003218)	0.014" (70003218)	0.010" (70010111)
RUBY ORIFICE	0.016" (70013061)	0.014" (70003217)	0.014" (70003217)	0.010" (70010113)
JET NOZZLE	0.300"x0.040" X3.00 (70003213)	0.300"x0.040" X3.00 (70003213)	0.300"x0.040" X3.00 (70003213)	0.300"x0.030"x3.00" (70006300)

36	70003331	GLAND NUT, 3/8" TUBE		2
35	70003330	HP COLLAR, 3/8" TUBE		2
34	70000758	COLLAR AND GLAND SET, 1/4		8
33	103416	AXIS 1 COIL TO FIXED "Y"		1
32	70000786	FLEXIBLE METAL HOSE, 3/8 ID		20
31	70000785	FLEXIBLE METAL HOSE, 1/4 ID		80
30	70003346	THIMBLE STYLE FILTER ELEMENT		1
29	102252	HP TUBE, 3/8, STRAIGHT		1
28	70009865	REDUCER COUPLING 4F6F		1
27	102248	HP TUBE, 3/8, X AXIS		1
26	70003284	MANIFOLD, 3/8" - (2) 1/4"		4
25	102247	HP TUBE, 1/4, X AXIS		2
24	102246	HP TUBE, 1/4, TEE TO GAUGE		1
23	70000773	GAUGE, WATER, 0-80,000 PSI		1
22	70000781	ELBOW, 3/8 HP		1
21	103415	HP COIL, AXIS ONE		1
20	102251	HP TUBE, 3/8, X TO TEE		1
19				
18	70000774	TEE, HP, 3/8		1
17	103021	HP TUBE, 1/4, Y AXIS		2
16	103074	HP TUBE, 1/4, Y TO C		1
15	70000756	ELBOW, 1/4		1
14				
13	102091	HP COIL, C AXIS		1
12	70003291	1/4" HP GLAND		1
11	102093	HP TUBE, 1/4, C TO A		1
10	103240	HP WHIP, A AXIS		1
9	70009968	1/4" ANTI-VIBRATION ASSEMBLY		2
8	70002373	1/4" HP STRAIGHT COUPLING		3
7	70008045	90 DEG 1/4" HP SWIVEL		1
6	70003290	1/4" HP COLLAR		1
5	70000755	ADAPTER, 3/8M X 1/4F		4
4	70006300	NOZZLE .300 X .030 LONG LIFE		1
3	70003271	DIALINE CUTTING HEAD ASSEMBLY		1
2	70003270	ACCUVALVE ASSY		1
1	70003272	ACCUVALVE MOUNT		1
NO	PART NO	DESCRIPTION	LENGTH	QTY

** SEE CUSTOMER ORDER FOR SPECIFIC PUMP/NOZZLE USED

9/23/24	KJK	ITEM 5 (70000755) QTY WAS 5, 70000781 QTY WAS (2), 70000785 QTY WAS (60), DELETE 102270 (ITEM 19), 103415 WAS 102092, 103416 WAS 102367, 70009865 WAS 70003326, ADDED AXIS 1 COIL DETAIL (PRE-REV D) ON SHEET 2, ADDED CUSTOMER SERVICE NOTE 2 ON SHEET 2, COIL INDEX TABLE UPDATED TO 103415 (WAS 102092)	D 10706 D 10706 D 10706 D 10706 D 10706 D 10706
---------	-----	--	--

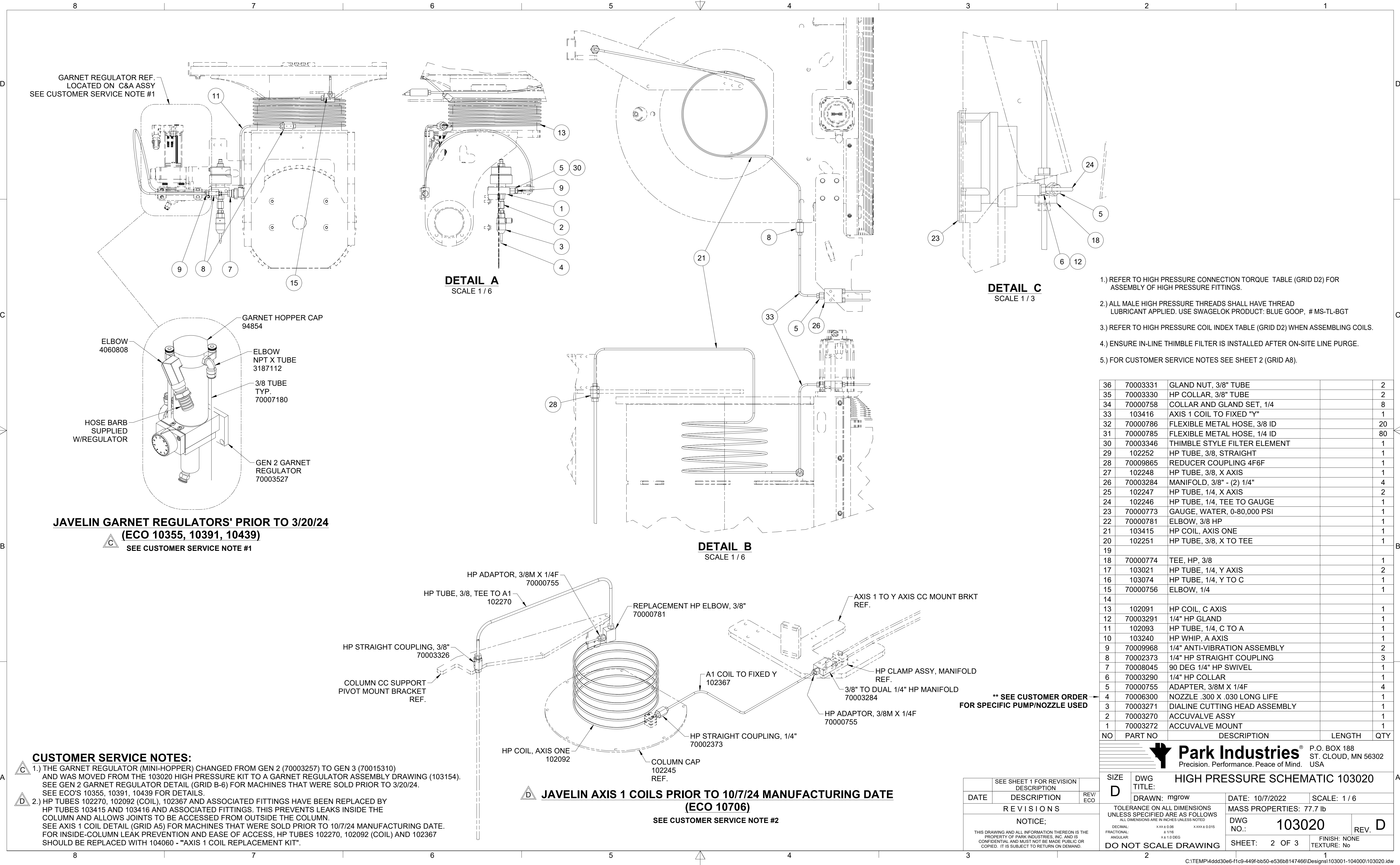
2/8/24	KJK	MOVED ITEM 14 (GARNET REG.) TO MFG. PRINT 103154, ADDED GARNET REGULATOR DETAIL ON SHT. 2 (GRID B-6), ADDED CUSTOMER SERVICE NOTE 1 ON SHT. 2	C 10355 C 10355 C 10355 B 10146 A
9/12/2023	MDG	103240 WAS 103106	
8/2/2023	MB	INITIAL RELEASE REV A PER CUSTOMER	
DATE	DESCRIPTION	REV/ECO	
REVISIONS			
NOTICE;			
THIS DRAWING AND ALL INFORMATION THEREON IS THE PROPERTY OF PARK INDUSTRIES, INC. AND IS CONFIDENTIAL AND MUST NOT BE MADE PUBLIC OR COPIED. IT IS SUBJECT TO RETURN ON DEMAND.			

**Park Industries**[®]
Precision. Performance. Peace of Mind. USA

P.O. BOX 188
ST. CLOUD, MN 56302


SIZE D
DWG TITLE: HIGH PRESSURE SCHEMATIC 103020
DRAWN: mgrow
DATE: 10/7/2022
SCALE: 1 / 12
TOLERANCE ON ALL DIMENSIONS UNLESS SPECIFIED ARE AS FOLLOWS
ALL DIMENSIONS ARE IN INCHES UNLESS NOTED
DECIMAL: .xxx ± 0.06
FRACTIONAL: x/xx ± 0.06
ANGULAR: x ± 1.0 DEG
DO NOT SCALE DRAWING

MASS PROPERTIES: 77.7 lb
DWG NO.: 103020
REV. D
SHEET: 1 OF 3
FINISH: NONE
TEXTURE: No



- 1.) REFER TO HIGH PRESSURE CONNECTION TORQUE TABLE (GRID D2) FOR ASSEMBLY OF HIGH PRESSURE FITTINGS.
- 2.) ALL MALE HIGH PRESSURE THREADS SHALL HAVE THREAD LUBRICANT APPLIED. USE SWAGelok PRODUCT: BLUE GOOP, # MS-TL-BGT
- 3.) REFER TO HIGH PRESSURE COIL INDEX TABLE (GRID D2) WHEN ASSEMBLING COILS.
- 4.) ENSURE IN-LINE THIMBLE FILTER IS INSTALLED AFTER ON-SITE LINE PURGE.
- 5.) FOR CUSTOMER SERVICE NOTES SEE SHEET 2 (GRID A8).

36	70003331	GLAND NUT, 3/8" TUBE		2
35	70003330	HP COLLAR, 3/8" TUBE		2
34	70000758	COLLAR AND GLAND SET, 1/4		8
33	103416	AXIS 1 COIL TO FIXED "Y"		1
32	70000786	FLEXIBLE METAL HOSE, 3/8 ID		20
31	70000785	FLEXIBLE METAL HOSE, 1/4 ID		80
30	70003346	THIMBLE STYLE FILTER ELEMENT		1
29	102252	HP TUBE, 3/8, STRAIGHT		1
28	70009865	REDUCER COUPLING 4F6F		1
27	102248	HP TUBE, 3/8, X AXIS		1
26	70003284	MANIFOLD, 3/8" - (2) 1/4"		4
25	102247	HP TUBE, 1/4, X AXIS		2
24	102246	HP TUBE, 1/4, TEE TO GAUGE		1
23	70000773	GAUGE, WATER, 0-80,000 PSI		1
22	70000781	ELBOW, 3/8 HP		1
21	103415	HP COIL, AXIS ONE		1
20	102251	HP TUBE, 3/8, X TO TEE		1
19				
18	70000774	TEE, HP, 3/8		1
17	103021	HP TUBE, 1/4, Y AXIS		2
16	103074	HP TUBE, 1/4, Y TO C		1
15	70000756	ELBOW, 1/4		1
14				
13	102091	HP COIL, C AXIS		1
12	70003291	1/4" HP GLAND		1
11	102093	HP TUBE, 1/4, C TO A		1
10	103240	HP WHIP, A AXIS		1
9	70009968	1/4" ANTI-VIBRATION ASSEMBLY		2
8	70002373	1/4" HP STRAIGHT COUPLING		3
7	70008045	90 DEG 1/4" HP SWIVEL		1
6	70003290	1/4" HP COLLAR		1
5	70000755	ADAPTER, 3/8M X 1/4F		4
4	70006300	NOZZLE .300 X .030 LONG LIFE		1
3	70003271	DIALINE CUTTING HEAD ASSEMBLY		1
2	70003270	ACCUVALVE ASSY		1
1	70003272	ACCUVALVE MOUNT		1
NO	PART NO	DESCRIPTION	LENGTH	QTY



Park Industries[®]
Precision. Performance. Peace of Mind. USA

P.O. BOX 188
ST. CLOUD, MN 56302

USA

SIZE
D

DWG
TITLE:
HIGH PRESSURE SCHEMATIC 103020

DRAWN: mgrow

DATE: 10/7/2022

SCALE: 1 / 6

TOLERANCE ON ALL DIMENSIONS
UNLESS SPECIFIED ARE AS FOLLOWS
ALL DIMENSIONS ARE IN INCHES UNLESS NOTED

DECIMAL: X.XX ± 0.06 X.XXX ± 0.015
FRACTIONAL: X/XX ± 1/16
ANGULAR: X ± 1.0 DEG

DO NOT SCALE DRAWING

MASS PROPERTIES: 77.7 lb

DWG
NO.: 103020

REV. **D**

SHEET: 2 OF 3

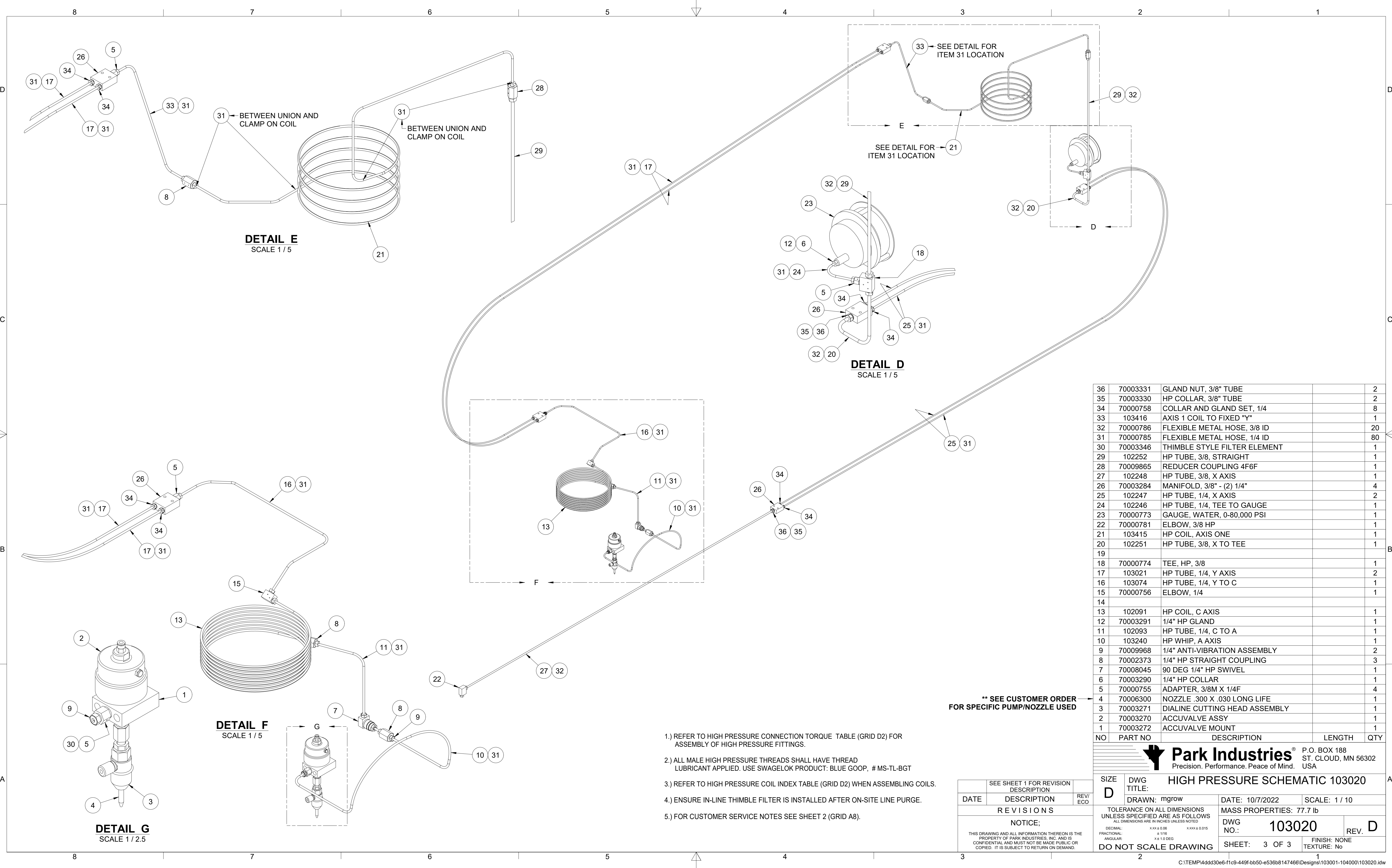
FINISH: NONE
TEXTURE: No

SEE SHEET 1 FOR REVISION DESCRIPTION	REV/ ECO
DATE	DESCRIPTION
REVISIONS	
NOTICE:	
THIS DRAWING AND ALL INFORMATION THEREON IS THE PROPERTY OF PARK INDUSTRIES, INC. AND IS CONFIDENTIAL AND MUST NOT BE MADE PUBLIC OR COPIED. IT IS SUBJECT TO RETURN ON DEMAND.	

CUSTOMER SERVICE NOTES:

1.) THE GARNET REGULATOR (MINI-HOPPER) CHANGED FROM GEN 2 (70003257) TO GEN 3 (70015310) AND WAS MOVED FROM THE 103020 HIGH PRESSURE KIT TO A GARNET REGULATOR ASSEMBLY DRAWING (103154). SEE GEN 2 GARNET REGULATOR DETAIL (GRID B-6) FOR MACHINES THAT WERE SOLD PRIOR TO 3/20/24. SEE ECO'S 10355, 10391, 10439 FOR DETAILS.

2.) HP TUBES 102270, 102092 (COIL), 102367 AND ASSOCIATED FITTINGS HAVE BEEN REPLACED BY HP TUBES 103415 AND 103416 AND ASSOCIATED FITTINGS. THIS PREVENTS LEAKS INSIDE THE COLUMN AND ALLOWS JOINTS TO BE ACCESSED FROM OUTSIDE THE COLUMN. SEE AXIS 1 COIL DETAIL (GRID A5) FOR MACHINES THAT WERE SOLD PRIOR TO 10/7/24 MANUFACTURING DATE. FOR INSIDE-COLUMN LEAK PREVENTION AND EASE OF ACCESS, HP TUBES 102270, 102092 (COIL) AND 102367 SHOULD BE REPLACED WITH 104060 - "AXIS 1 COIL REPLACEMENT KIT".



DETAIL E
SCALE 1 / 5

DETAIL D
SCALE 1 / 5

DETAIL F
SCALE 1 / 5

DETAIL G
SCALE 1 / 2.5

- 1.) REFER TO HIGH PRESSURE CONNECTION TORQUE TABLE (GRID D2) FOR ASSEMBLY OF HIGH PRESSURE FITTINGS.
- 2.) ALL MALE HIGH PRESSURE THREADS SHALL HAVE THREAD LUBRICANT APPLIED. USE SWAGELOK PRODUCT: BLUE GOOP, # MS-TL-BGT
- 3.) REFER TO HIGH PRESSURE COIL INDEX TABLE (GRID D2) WHEN ASSEMBLING COILS.
- 4.) ENSURE IN-LINE THIMBLE FILTER IS INSTALLED AFTER ON-SITE LINE PURGE.
- 5.) FOR CUSTOMER SERVICE NOTES SEE SHEET 2 (GRID A8).

**** SEE CUSTOMER ORDER
FOR SPECIFIC PUMP/NOZZLE USED**

SEE SHEET 1 FOR REVISION DESCRIPTION		
DATE	DESCRIPTION	REV/ECO
REVISIONS		
NOTICE;		
THIS DRAWING AND ALL INFORMATION THEREON IS THE PROPERTY OF PARK INDUSTRIES, INC. AND IS CONFIDENTIAL AND MUST NOT BE MADE PUBLIC OR COPIED. IT IS SUBJECT TO RETURN ON DEMAND.		

36	70003331	GLAND NUT, 3/8" TUBE		2
35	70003330	HP COLLAR, 3/8" TUBE		2
34	70000758	COLLAR AND GLAND SET, 1/4		8
33	103416	AXIS 1 COIL TO FIXED "Y"		1
32	70000786	FLEXIBLE METAL HOSE, 3/8 ID		20
31	70000785	FLEXIBLE METAL HOSE, 1/4 ID		80
30	70003346	THIMBLE STYLE FILTER ELEMENT		1
29	102252	HP TUBE, 3/8, STRAIGHT		1
28	70009865	REDUCER COUPLING 4F6F		1
27	102248	HP TUBE, 3/8, X AXIS		1
26	70003284	MANIFOLD, 3/8" - (2) 1/4"		4
25	102247	HP TUBE, 1/4, X AXIS		2
24	102246	HP TUBE, 1/4, TEE TO GAUGE		1
23	70000773	GAUGE, WATER, 0-80,000 PSI		1
22	70000781	ELBOW, 3/8 HP		1
21	103415	HP COIL, AXIS ONE		1
20	102251	HP TUBE, 3/8, X TO TEE		1
19				
18	70000774	TEE, HP, 3/8		1
17	103021	HP TUBE, 1/4, Y AXIS		2
16	103074	HP TUBE, 1/4, Y TO C		1
15	70000756	ELBOW, 1/4		1
14				
13	102091	HP COIL, C AXIS		1
12	70003291	1/4" HP GLAND		1
11	102093	HP TUBE, 1/4, C TO A		1
10	103240	HP WHIP, A AXIS		1
9	70009968	1/4" ANTI-VIBRATION ASSEMBLY		2
8	70002373	1/4" HP STRAIGHT COUPLING		3
7	70008045	90 DEG 1/4" HP SWIVEL		1
6	70003290	1/4" HP COLLAR		1
5	70000755	ADAPTER, 3/8M X 1/4F		4
4	70006300	NOZZLE .300 X .030 LONG LIFE		1
3	70003271	DIALINE CUTTING HEAD ASSEMBLY		1
2	70003270	ACCUVALVE ASSY		1
1	70003272	ACCUVALVE MOUNT		1
NO	PART NO	DESCRIPTION	LENGTH	QTY

Park Industries® P.O. BOX 188
ST. CLOUD, MN 56302
Precision. Performance. Peace of Mind. USA

SIZE D	DWG TITLE: HIGH PRESSURE SCHEMATIC 103020		
DRAWN: mgrow		DATE: 10/7/2022	SCALE: 1 / 10
TOLERANCE ON ALL DIMENSIONS UNLESS SPECIFIED ARE AS FOLLOWS ALL DIMENSIONS ARE IN INCHES UNLESS NOTED		MASS PROPERTIES: 77.7 lb	
DECIMAL: .xxx ± 0.06 FRACTIONAL: x/xx ± 1/16 ANGULAR: x ± 1.0 DEG		DWG NO.: 103020	REV. D
DO NOT SCALE DRAWING		SHEET: 3 OF 3	FINISH: NONE TEXTURE: No